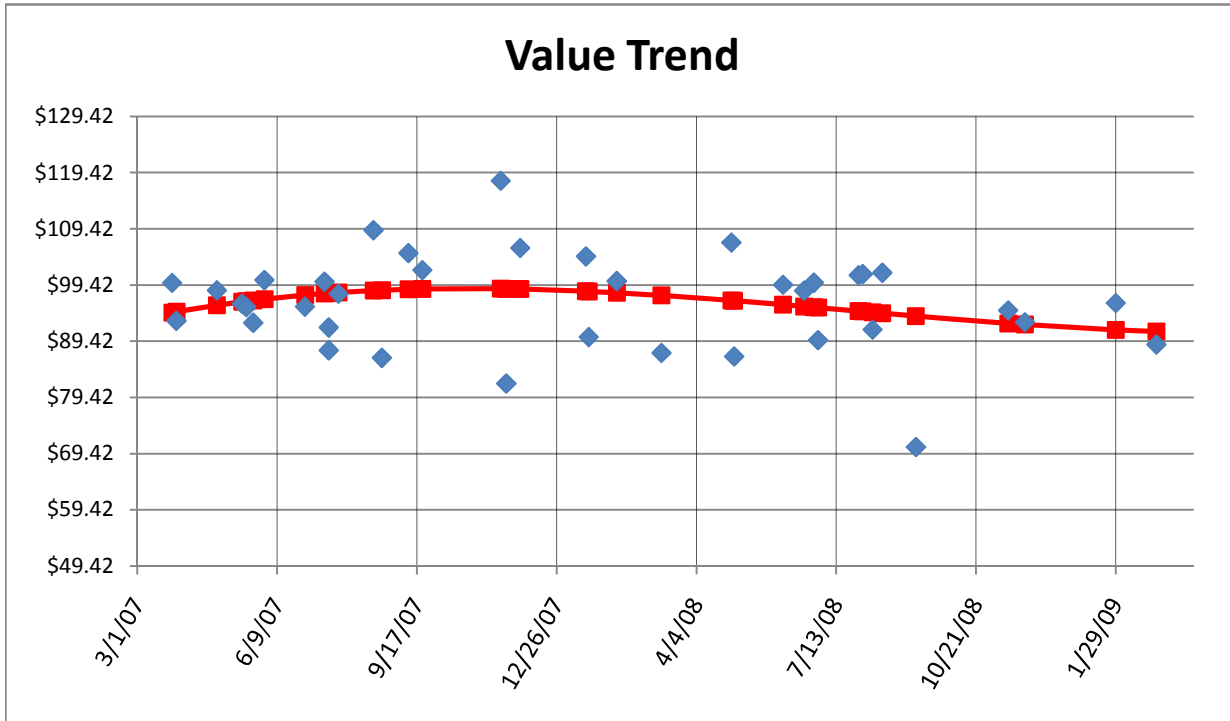




MARKET CONDITION ADJUSTMENT EXTRACTOR & APPLICATOR

This data is the same data presented in the Market Condition Analysis. The chart below trends the sales price per square foot over time.



The sales are adjusted for market conditions based on the following equation:

$$y = 0.000000092556292818x^3 - 0.000135948399572491x^2 + 0.045085341478930500x + 94.477207979302500000$$

03/01/09	Comparison Point (usually Efft Date of Appraisal)	\$91.11
----------	---	---------

Sale	Sales Price	Date	Point Val*	Aggregate Adjustments		Mkt. Condition Adj. Sales Price
				(%)	(\$)	
1	\$160,000	06/09/07	\$97.16	-6.23%	-\$9,965.42	\$150,035
2	\$135,000	12/26/07	\$98.51	-7.51%	-\$10,145.24	\$124,855
3	\$187,000	10/21/08	\$93.03	-2.07%	-\$3,863.61	\$183,136
4						
5						
6						
7						
8						
9						

* Point Value is the indicated Y-value on the trend line at the date of sale (X-value).